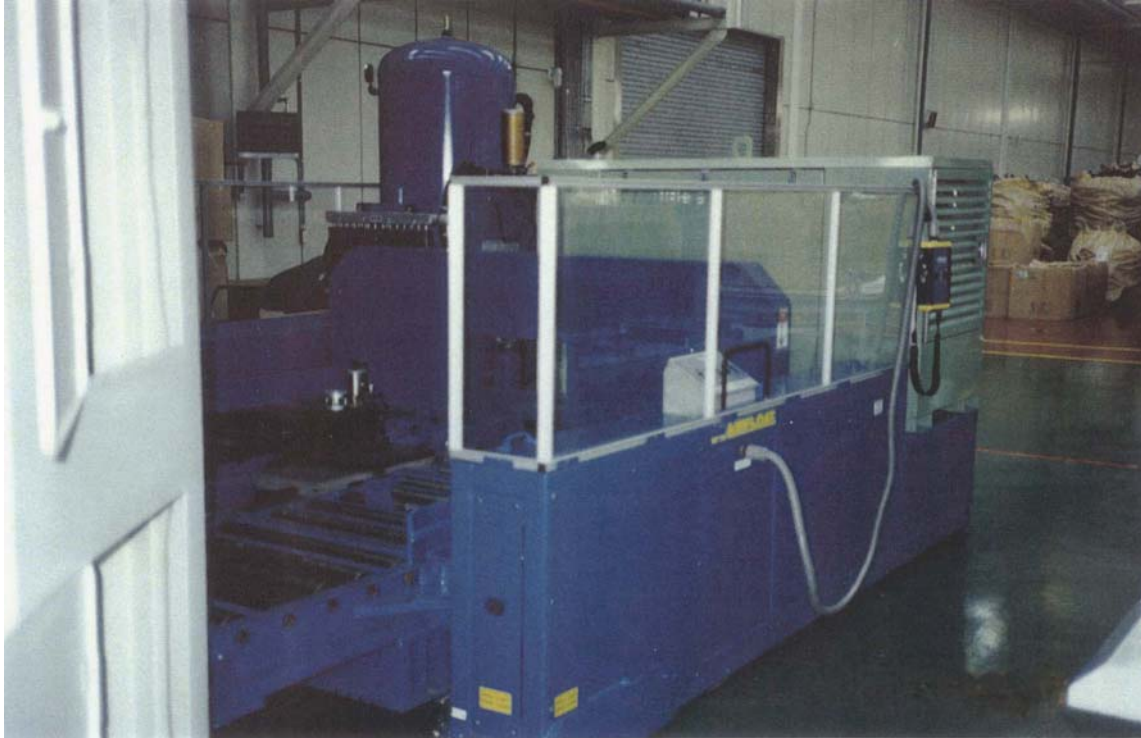


## Self-Contained Single Position Quick Mold Changer



### APPLICATION:

An Airfloat customer required a mold changer that would have the capability of docking with and transferring a 60,000 lbs mold in and out of a Compression Molding press.

### SOLUTION:

The mold changer consists of an air bearing platform with structural steel riser and roller deck top, push/pull device, and an extension bridge. The changer has its own internal safety features which insure that the mold change sequence may not take place unless the transporter is locked properly. A fail-safe mold stop is located at each end of the fixed platen roller section. The push/pull device consists of a ball screw slide with dual pivoting mold hook engagement arms located on the slide carriage. The changer has a load capacity of 60,000 lbs with a lift height of 7 7/8".

### BENEFITS:

- Eliminates the risk of life-threatening injury to the operator created by other tool changing methods
- Eliminates tool and press damage
- Operates on its own air supply, eliminating the need for an external air hose connection
- The docking rail insures that the mold changer is correctly aligned with press.
- Safety features provide equipment and personnel safety as well as insure that mold transfer does not occur unintentionally or out of sequence.