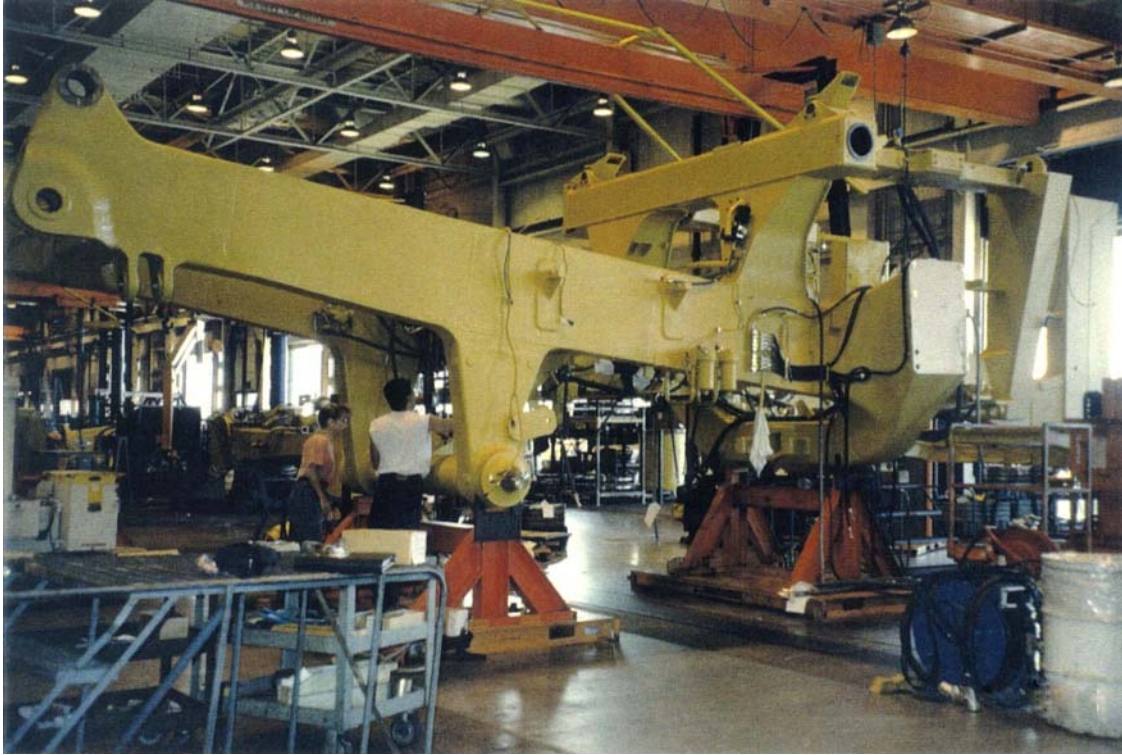


Mining Truck Transporter

**APPLICATION:**

A producer of mining equipment needed a safe and effective solution to their difficult task of moving a mining truck through final assembly. The previous procedure proved too time consuming and dangerous for the operators.

SOLUTION:

Airfloat designed sets of dual air bearing platforms that use an air motor powered drive system. Each platform's dimensions are 98" long by 67" wide by 6 ¼" high from the floor and support the existing assembly stands. The system is controlled by a hand held pendant with variable speed control ranging from 0-10 miles per hour. The differential in speed of the platforms is controlled separately, allowing for steering capabilities.

BENEFITS:

- The operator can easily maneuver the loaded platform with the use of friction-free, omni-directional air bearings.
- Speed control on each of the transporters allows for accurate positioning.
- Total pneumatic power for low cost installation
- Operation time was cut dramatically, resulting in increased productivity.
- Safety of the assembly process dramatically improved by eliminating use of overhead cranes.